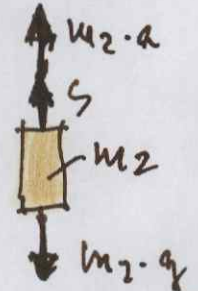
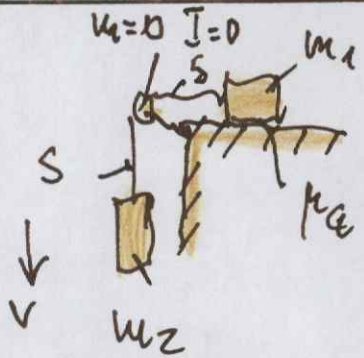
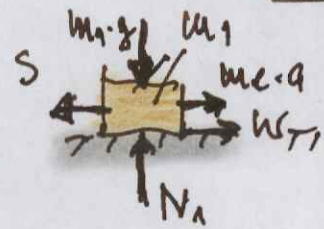


- Gleitreibung -



$$m_2 \cdot a + S - m_2 \cdot g = 0$$

$$S = m_2 \cdot g - m_2 \cdot a$$



$$S - m_1 \cdot g - W = 0$$

$$W = N_1 \cdot \mu_g \quad N_1 = m_1 \cdot g$$

$$S = W + m_1 \cdot a$$

$$= m_1 \cdot g \cdot \mu_g + m_1 \cdot a$$

$$m_2 \cdot g - m_2 \cdot a = m_1 \cdot g \cdot \mu_g + m_1 \cdot a$$

$$\mu_g = \frac{m_2(g-a) - m_1 \cdot a}{m_1 \cdot g}$$

07.06.2022

irrtum vorbehalten